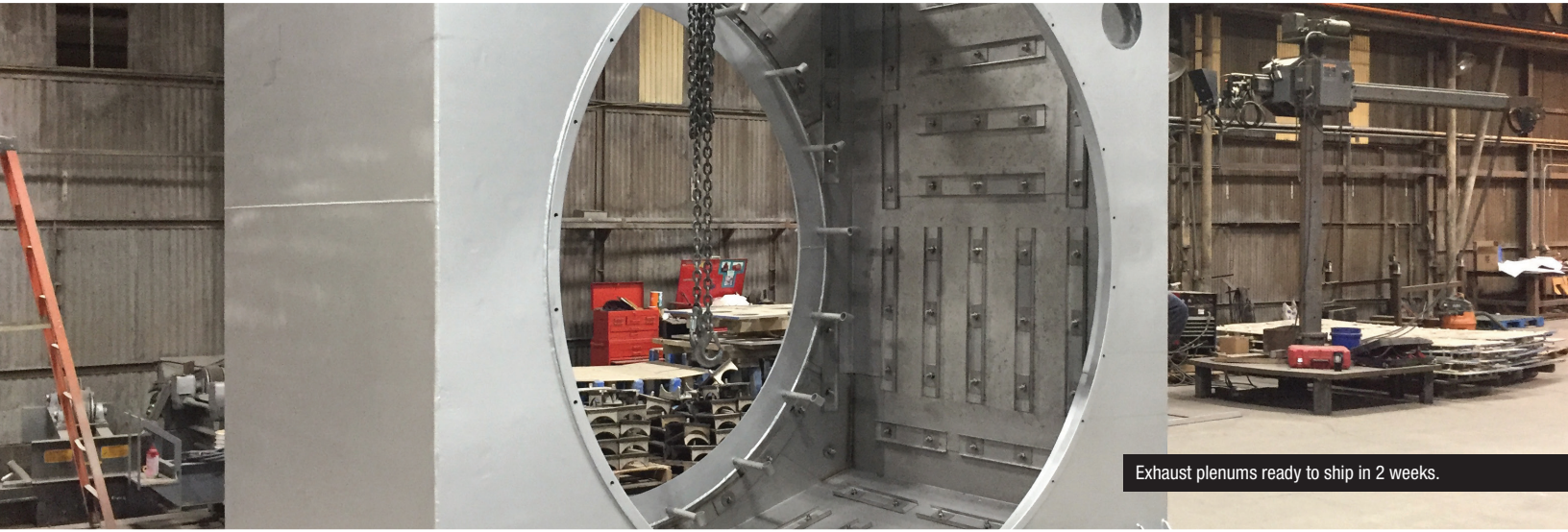


# **SCHOCK** Emergency Services

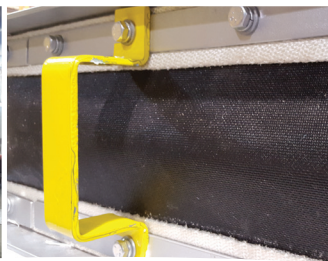
Fast Response for Your Unexpected Repairs



Exhaust plenums ready to ship in 2 weeks.



New duct section designed, fabricated and delivered in 3 weeks during an outage.



Replacement expansion joint, ready for delivery.



1) Damage to the silencer floor discovered during outage.



2) Designed new floor and began demolition same day.



3) Silencer floor upgrade completed on day 3.

Intermittent wind and solar power is causing many GT plants to cycle much more frequently than ever before, increasing plant wear in unexpected ways, particularly on exhaust-side thermal components.

Schock can help: we have our own, centrally located shop, stocked with replacement materials for many of the most frequently repaired/replaced systems. Because we both design and fabricate in-house, we have complete control over engineering, manufacturing quality, and timely deliveries.

## **Schock Can Supply in Hours/Days**

- Exhaust Expansion Joint Patches, Splices, and Full Belts
- Exhaust Thermal Insulation and Insulation Pillows
- Exhaust Liners (cut to size) & Liner Hardware
- Exhaust Liner Kits — IN STOCK
- Trash Screens for Inlet or Exhaust
- Diverter Blade Repairs/Parts
- HRSG Distribution Plate Repairs
- 304SS Exhaust Flex Seals for FS7EA, FS6 and FS5 — IN STOCK
- Exhaust Plenum Assemblies FS7EA, FS6 and FS5 — IN STOCK (lead time of approximately 2 weeks)

## **Schock Advantages**

- Expert Design and Fabrication of Repair Components
- Highly Responsive to Your Unexpected Repair Needs
- Turnkey Repairs/Installation if Requested





# **SCHOCK** Emergency Services

Fast Response for Your Unexpected Repairs



Exhaust liner replacement.



Replacement of  
silencer baffles.



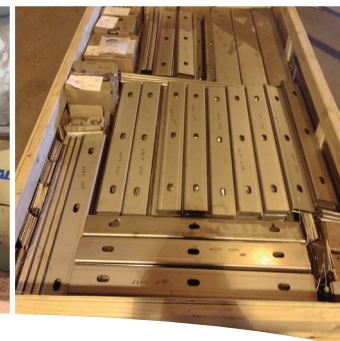
Emergency removal of  
failed baffles.



Round "trash screen" for  
exhaust stack.



Example of emergency  
repair kit for expansion joint.



Schock pre-fabricates  
numerous components to have  
on hand for your emergencies.

**Gene Schockemoehl**  
President

[gene@schock-mfg.com](mailto:gene@schock-mfg.com)

D: 918-609-3600 x200  
M: 918-625-2098  
F: 918-609-3610

**Scott Schockemoehl**  
General Manager

[scott@schock-mfg.com](mailto:scott@schock-mfg.com)

D: 918-609-3600 x100  
M: 918-639-3201  
F: 918-609-3610

**Jeff Cozbey**  
Sales & Projects

[j.cozbey@schock-mfg.com](mailto:j.cozbey@schock-mfg.com)

D: 918-609-3600 x375  
M: 918-640-9191  
F: 918-609-3610



**Jeff Graham**  
Sales & Projects

[j.graham@schock-mfg.com](mailto:j.graham@schock-mfg.com)

D: 918-609-3600 x350  
M: 918-508-5544  
F: 918-609-3610

**Laquinnia Lawson, Jr.,**  
Professional Engineer  
Engineering Manager

[llawson@schock-mfg.com](mailto:llawson@schock-mfg.com)

D: 918-609-3600 x300  
M: 918-691-3096  
F: 918-609-3610

**Rocck Mallory**  
Quality Manager

[rocck@schock-mfg.com](mailto:rocck@schock-mfg.com)

D: 918-609-3600 x600  
M: 918-219-3603  
F: 918-609-3610



Schedule a free site inspection/scope review: [www.schock-mfg.com](http://www.schock-mfg.com)